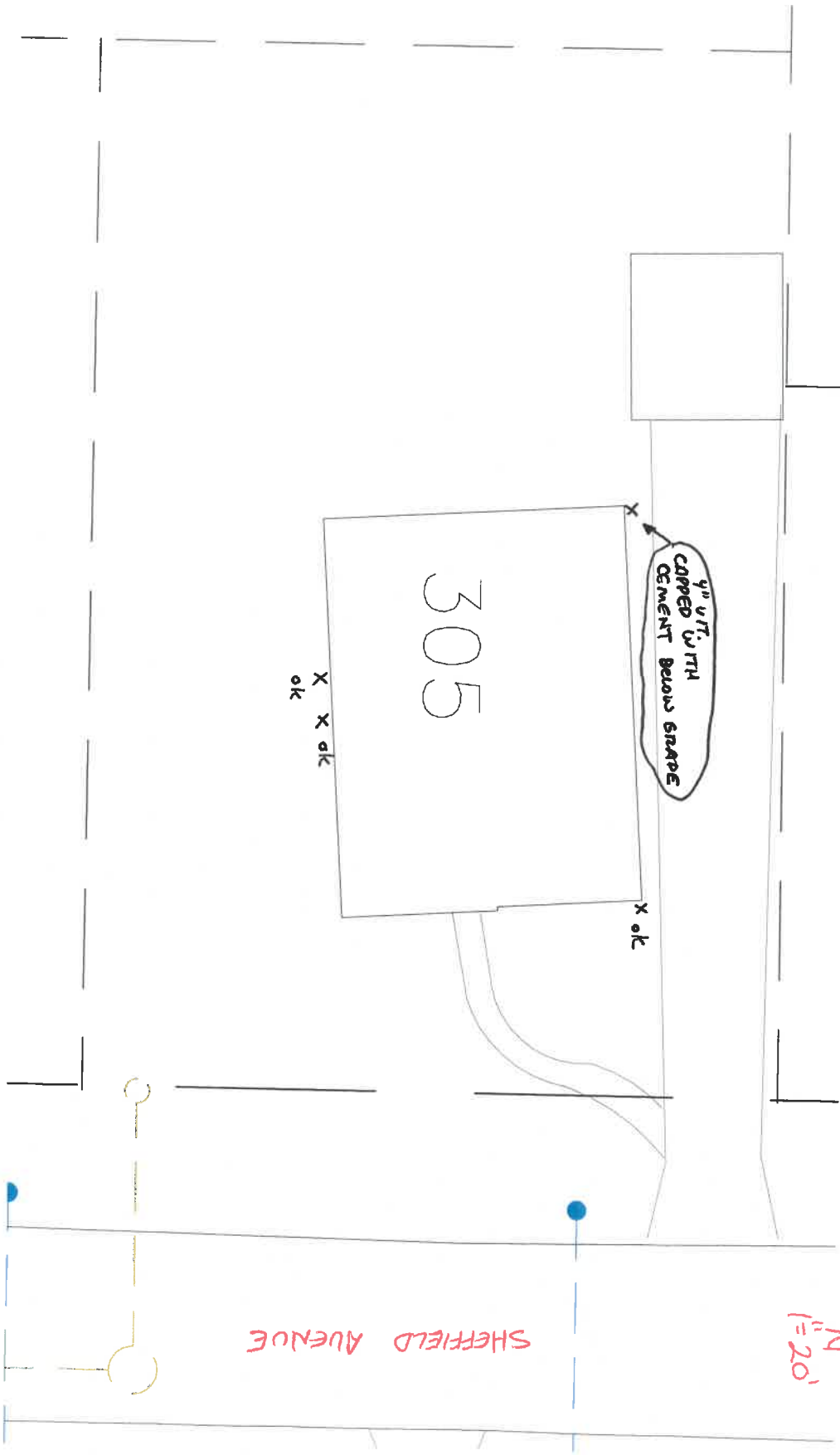


305 SHEFFIELD AVENUE

DATE: 4-17-15
INSPECTED BY: MARY CROSSLAND
INVESTIGATION OF ILLEGAL SEWER
CONNECTIONS. ONE ILLEGAL DOWN-
SPOUT CONNECTION WAS CAPPED AND
PLUGGED WITH CEMENT BELOW GRADE.



SCANNED